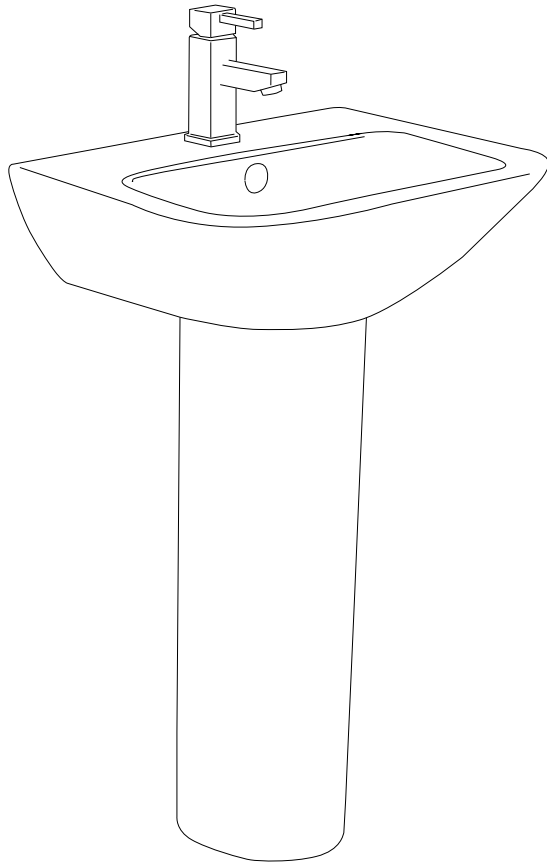


## Pedestal Basin



## Installation Manual

Please keep these instructions for future reference

## Contents

- Page 2 - Safety
- Page 2 - Maintenance
- Page 3 - Installation
- Page 4 - Installation
- Page 5 - Guarantee

## Safety

1. Care should be taken when drilling into walls and floors to avoid any hidden pipes or wires.
2. Wear safety glasses when drilling

## Maintenance

### Cleaning and care

To keep the basin's appearance the following guidelines must be followed, failure to do so may result in damage of the product.

Strong chemicals and alkalis such as ammonia, caustic soda, paint strippers, brush cleaners and nail varnish removers must not come into contact with the basin because they can cause damage.

Please take care not to drop any objects from an excessive height as this may chip or crack the surface glaze.

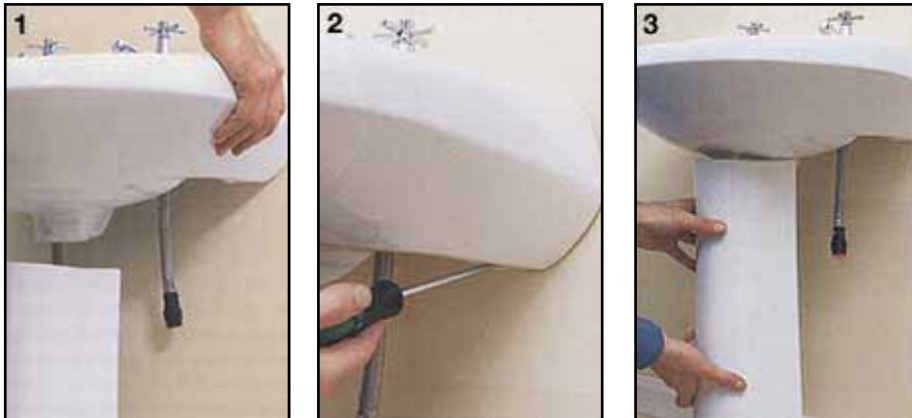
Ceramic basins can be cleaned with most cleaners, including mild abrasives. Metallic pan scrubbers are not recommended as metal on ceramic **can cause** grey marks. These grey marks can also be caused by pans and cutlery, they can be removed by a mild abrasive cleaner (i.e. kitchen cleaner that contains maximum 5% bleach only) and a non-metallic pan scrubber.

Bleach can be used on the basin, but please ensure sink is rinsed thoroughly.

# Installation

The most commonly used washbasin is the pedestal type. This requires the basin to be secured to the wall while resting on a matching china pedestal, which provides balanced central support. The pedestal incorporates a void for hiding the supply pipes and waste.

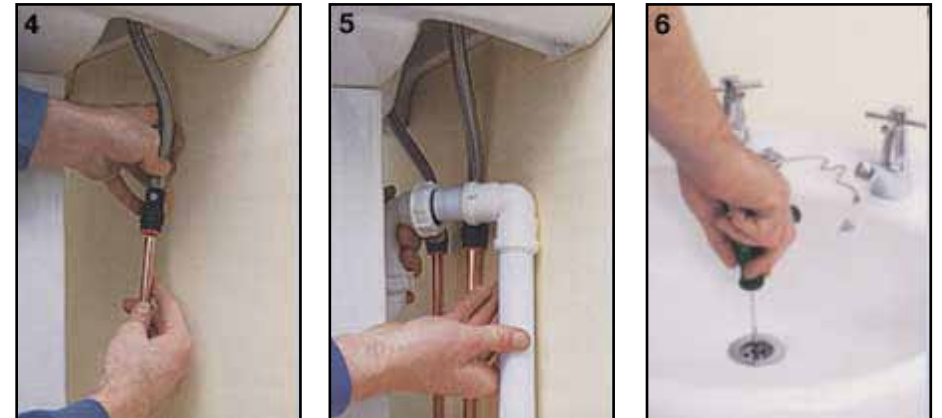
Pedestal washbasins are available in lots of wonderful designs and different colours. There is also a wide choice of taps and mixers with plugs or pop-up wastes, so remember to purchase the taps and waste at the same time as the basin, to ensure you get exactly what you want. It makes sense to fit the taps before you install the basin, after which access will be awkward to say the least.



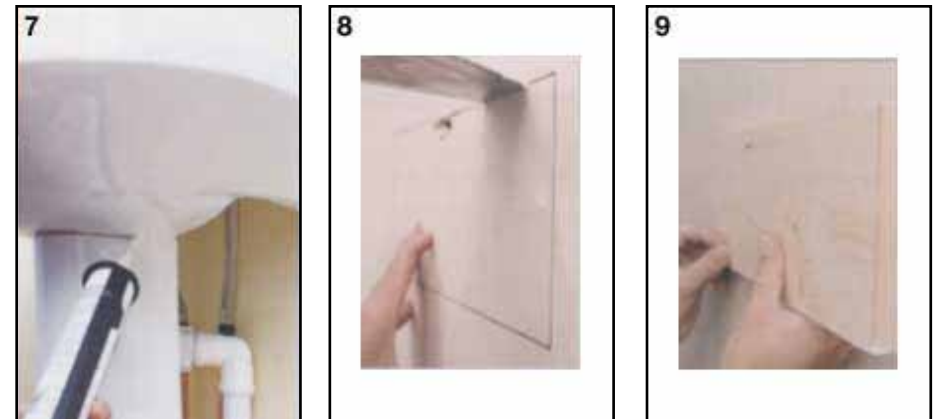
If you are simply replacing an existing pedestal basin, the process is relatively simple. Mark the position of the basin on the wall, using the pedestal to position it 1. Screw the basin to the wall 2, or hang it on brackets depending on the type. Slide the pedestal underneath 3 and connect the supply pipes to the taps 4. Fit the trap to the basin waste 5. Screw in the plughole 6 and attach the plug. Make a mastic seal around the pedestal top and the basin base 7. Once you have done all your tiling and flooring, you can seal where the basin is in contact with the wall and around the base of the pedestal mounted basins.

Sometimes, things are a little less straightforward. Some new mixer taps won't attach to old tap connectors, and require simple pipework alterations. If you are re-siting a pedestal basin, you may have to alter and conceal the supply pipework and waste pipe. These could be hidden behind the skirting if the wall is studwork, or chased in if the wall is solid. Ensure that rodding eyes

# Installation



for servicing are fitted to both ends of the waste pipe run. Remember, too, that the waste pipe requires a slight fall – a minimum of 6mm (1/4in) to every 300mm (12in) of pipe run. The total pipe run length should not exceed 3m (approximately 10ft).



New pipe runs are best fitted to the wall surface, then boxed in. Take care not to damage the pipes when fitting, and ensure it is detachable for access.

## Guarantee

Peace of mind comes as standard with bathrooms.com  
At bathrooms.com we understand how important purchasing a new bathroom is and we want to give you the peace of mind which lets you get on and enjoy your bathroom. That's why we offer a lifetime guarantee on all our products no matter how large or small.

Simply register your purchase within 30 days of placing your orders and we will replace your products if there is a product fault or issue with your order(s).

Terms and conditions apply. Available at:  
<http://www.bathrooms.com/terms-of-use>

## Thank you!

Thank you for buying this product from bathrooms.com.

We hope you are fully satisfied with the product and service we provide.

If you need any further help or advice with your purchase, then please feel free to call our customer service team on the number below or alternatively you can email us at [sales@bathrooms.com](mailto:sales@bathrooms.com)

[www.bathrooms.com](http://www.bathrooms.com)

Customer Service: 0845 833 4441

Technical Support: 01525 300 751

email: [sales@bathrooms.com](mailto:sales@bathrooms.com)

**bathrooms.com**